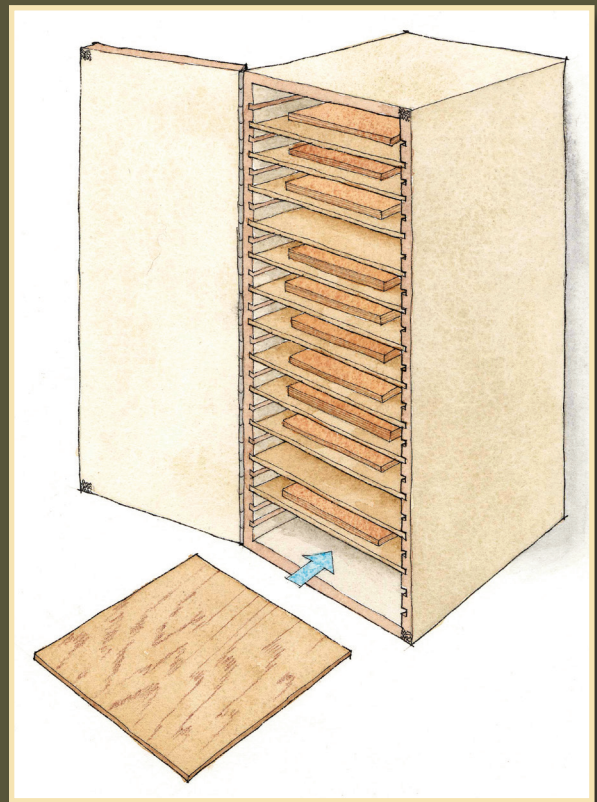


TAUNTON'S *Fine Woodworking*®

Sandpaper Storage Cabinet

A project plan for a
sandpaper storage
cabinet with
built-in cutter



For more FREE
project plans from
Fine Woodworking

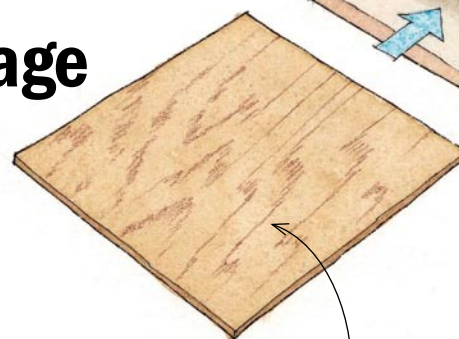
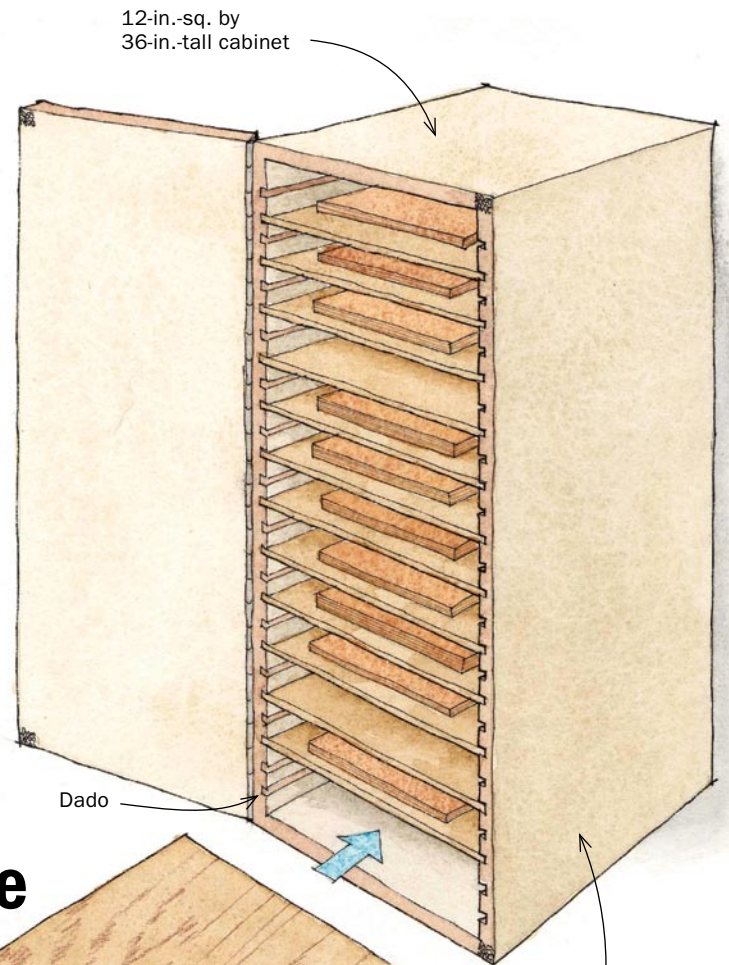
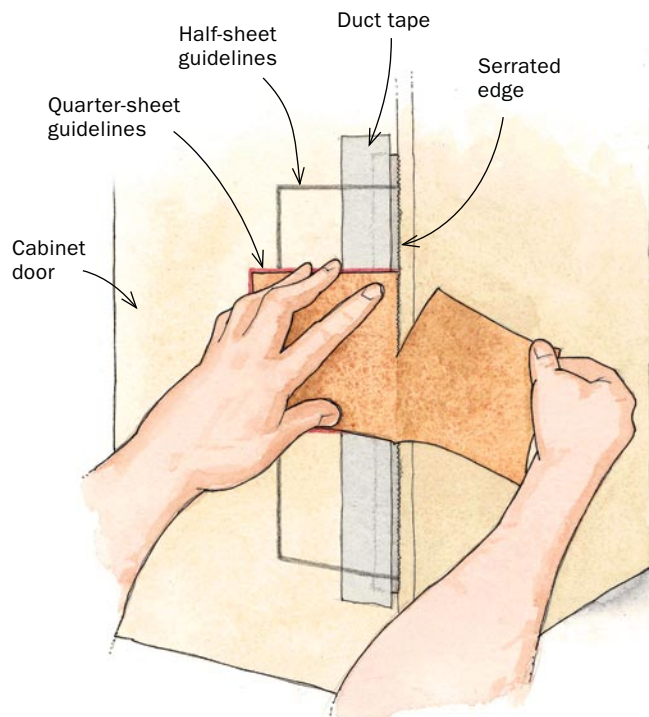
► [CLICK HERE NOW!](#)



See how our magazine
makes you a better
woodworker

► [SUBSCRIBE TODAY!](#)





Cut dado so that shelves slide smoothly.

All parts (except shelves) are 3/4-in.-thick plywood

1/4-in.-thick plywood shelf slides in dado.

Best Tip Sandpaper-storage cabinet with built-in cutter



A woodworker for more than 25 years, much of that time spent running a full-time professional shop, Bill Duckworth is a former associate editor for *Fine Woodworking*. This cabinet is mounted on a wall where it's within easy reach of his workbench.

I HAVE A 12-IN.-SQ. BY 36-IN.-TALL CABINET with about a dozen adjustable 1/4-in. plywood shelves. The shelves ride in dados and pull out for access to the contents, making them the perfect place to store sheets of sandpaper. The sheets stay flatter and aren't as likely to curl on humid days.

To make the cabinet even more useful, I saved the serrated edge from a roll of plastic wrap and used duct tape to apply it to the outside edge of the cabinet door. The serrated edge makes it easy to tear full sheets of sandpaper into halves or quarters.

Also, I used two permanent markers (one black, one red) to draw lines on the front of the door. Using the lines as a guide, I can quickly position the sandpaper and tear it to the right size.

—BILL DUCKWORTH, Woodbury, Conn.

A Reward for the Best Tip

Send your original tips to Methods of Work, *Fine Woodworking*, PO Box 5506, Newtown, CT 06470, or email fwmow@taunton.com. If published, we pay \$50 for an unillustrated tip; \$100 for an illustrated one. The author of the best tip gets a pair of Brian Boggs spokeshaves (one flat, one curved) made by Lie-Nielsen Toolworks.

